



CHISON
Value Beyond Imaging

NEWMED



Canine Liver,B Mode



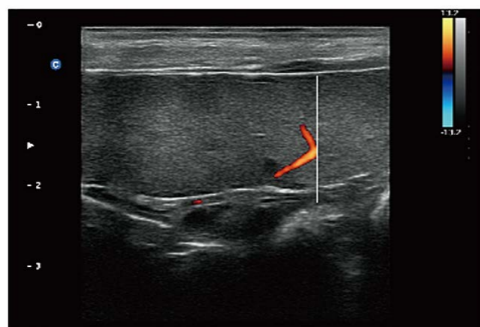
Canine Bladder,B Mode



Canine Kidney,B Mode



Canine Spleen,B Mode



Canine Spleen,C Mode



Canine Kidney,C Mode



4.0MHz-12.0MHz Micro-Convex
MC6-E



7.0MHz-18.0MHz (with FHI) Linear
L12-E



2.0MHz-6.8MHz Micro-Convex
MC3-E



4.0MHz-15.0MHz Linear
L7-E



4.0MHz-10.7MHz Micro-Convex
MC5-E



4.0MHz-10.0MHz Linear Rectal
L7V-E



2.0MHz-6.8MHz Convex
C3-E



5.0MHz-10.0MHz Trans-Rectal
L7R-E

EBit 30 vet



CHISON Medical Technologies Co., Ltd.

Sales & Service Contact Address:
No.9, Xinhuihuan Road, Xinwu District, Wuxi, Jiangsu, China 214028
TEL : 0086-510-85310593 / 85310937 **FAX :** 0086-510-85310726 **EMAIL :** export@chison.com.cn

We reserve the right to make changes to this catalogue without prior notice
Please contact our local dealer for the latest information.

EBit 30 vet-20190329



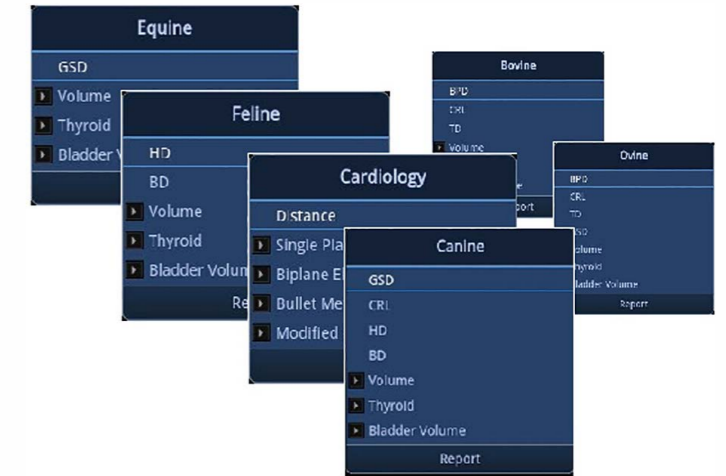
WWW.CHISON.COM





Easy to measure

- Complete calculation solution for both small animal and large animal.
- Dedicated vet preset.
- User-defined measurement package, follow veterinarian's intuitiveness.

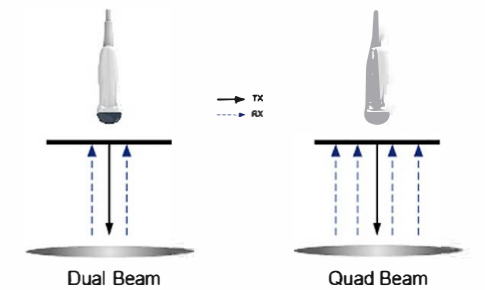


Fast Easy



Easy to acquire the image

- Q-beam** for rapid breath of small animal.
- Compared to the traditional dual-beam, EBit 30 VET uses quad-beam to receive signal, thus doubles the volume of signal received as well as the frame rate.
 - Higher frame rate ensures better diagnostic confidence and efficiency. Especially for rapid movement of small animals.



EBit 30 vet is developed with ultra-compact and lightweight design, outstanding veterinary performance, dedicated veterinary software packages and easy-to-use workflow, providing the complete solutions to small animals and large animals. Lot's of unique features, such as **18MHZ high frequency linear probe**, **Full screen display mode**, **2hrs battery life**, help to enhance the veterinarian's daily practice .

- ✓ 18MHZ high frequency linear probe
- ✓ Ultra-long battery life up to 2hrs
- ✓ Full Screen display mode
- ✓ Triplex mode
- ✓ Real time saving
- ✓ Complete DICOM solution



Easy to match all the applications

- 18MHZ high frequency linear
- Professional micro-convex probe
- Ergonomic design
- Wide frequency range: 4.0Mhz-12.0Mhz
- Dedicated linear-rectal probe for large animal's reproduction

