

# ECO 3 EXPERT VET

Black & White with Doppler  
Stunningly Good



# Key Benefits

- High-end B&W system with PW function, extended diagnose way
- Fashion design with **high resolution LED monitor**;
- Ultra-long battery life for long time use;
- Advanced technologies allow **excellent image** quality;
- Professional **probes** and **software** for veterinary;
- **Streamlined workflow** supports efficient exam;
- **Full Screen** function to enlarge the image;
- Complete solutions for accessories



# Fashion Design



## 12 inch LED monitor

- Bright image even scan outdoor;
- Low energy consuming;
- Longer life than LCD;

## Elegant keyboard design

Ultra-compact  
Ultra-light  
Easy to carry





**Monitor is rotatable:**  
0 ~ 30°: tailor to different  
viewing angle

**Various output ports:**  
DICOM,VIDEO

**Dual probe  
holder**

**Ultra-long battery life of 2.5 hrs.**



# Better solution with cart (TR9000)

## All-in-One

- Fashional design
- Powerful Function
- Unit can be fixed on the table through the screw  
(fasten the unit & theft-proof)

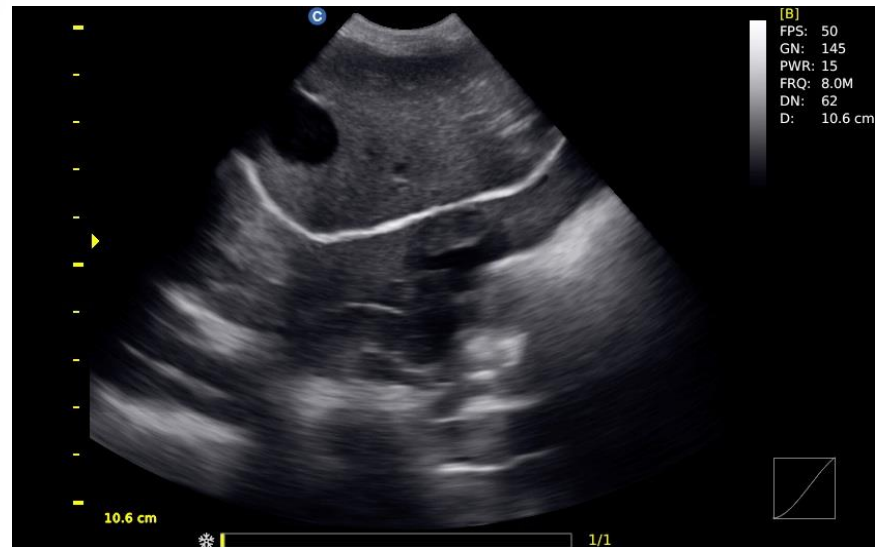
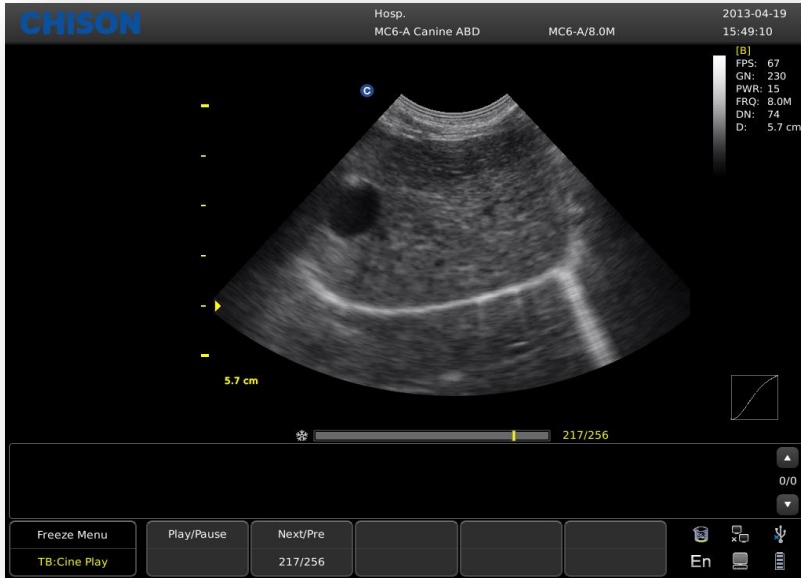


# Excellent Performance

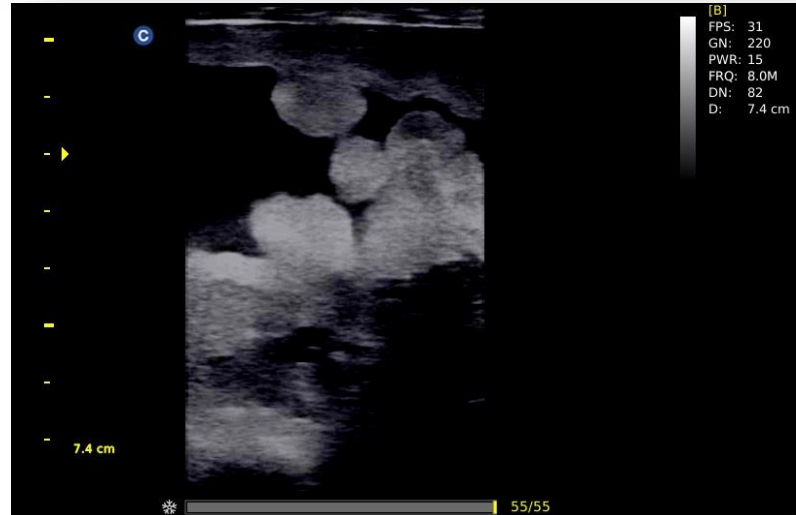
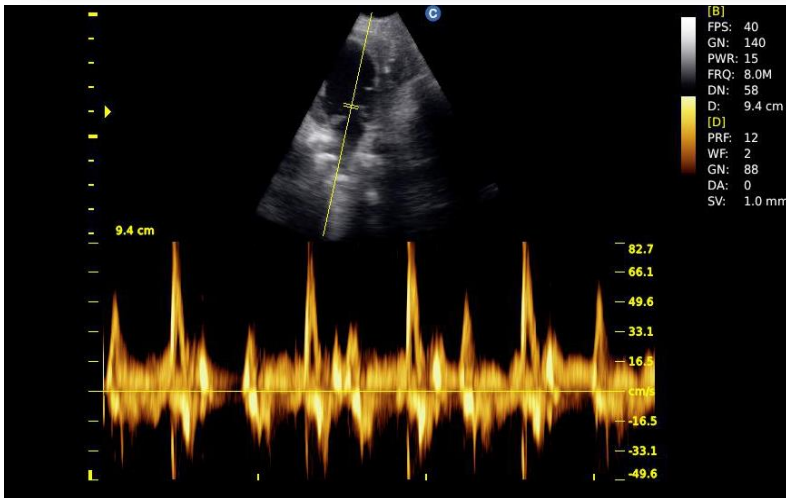
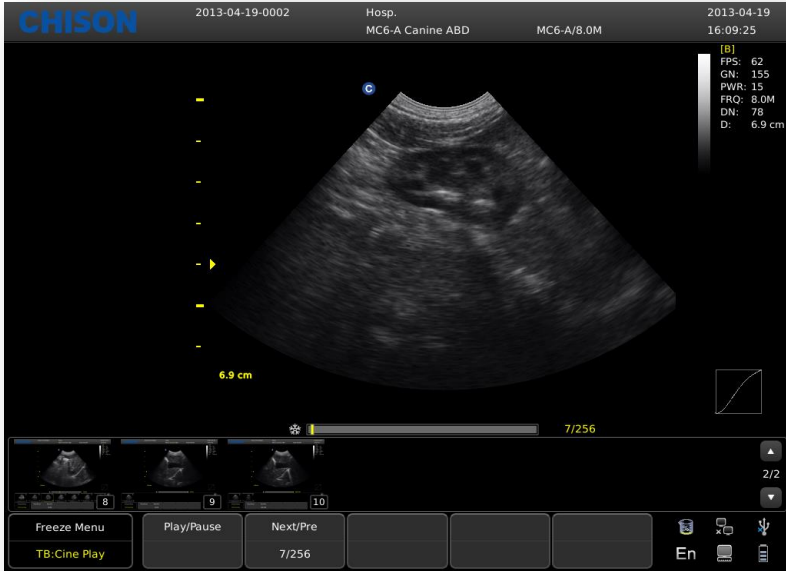
- Multiple Beam Former
- Space Compound Imaging
- SRA(speckle reduction technology )
- i-Image
- THI
- Chroma



# Image Galley



# Image Galley



# Dedicated veterinary probes

Probe	Type	Application
MC6-A	6.0MHz Micro-Convex	Abdomen, cardiac, urology, OB/GYN Small animal: <15kg
MC5-A	5.0MHz Micro-Convex	Abdomen, Cardiac, Urology, OB/GYN Small animal:>10kg
MC3-A	3.0MHz Micro-Convex	Abdomen, Cardiac, Urology, OB/GYN Small animal:>35kg
L7M-A	7.5MHz Linear	Small parts, vascular, tendon Small animal and large animal
C3-A	3.5MHz Convex	Abdomen, Large animal
L7V-A	7.5MHz Linear rectal	Reproduction, OB/GYN Large animal
R7-A	7.5MHz transrectal	Reproduction, OB/GYN, Ovine

## Special Transducer --- MC6-A

- Smaller footprint , easy to target whole body,better pet care
- Ergonomic design, release from scanning fatigue
- Higher frequency , up to 8 MHz, obtain near filed image
- Lower weight, easy to carry, easy to scan



## Special Transducer --- MC3-A

- **Smaller footprint , Cover over 35kg Canine**
- **Ergonomic design, release from scanning fatigue**
- **Lower frequency , but higher penetration**
- **Lower weight, easy to carry, easy to scan**



## Special Transducer --- L7V-A

- Double coating: protect the cable
- **3.0m** cables: keep the system safe from the animal
- Higher frequency : up to 10.0MHz, obtain near field image
- Black color: easy to keep clean

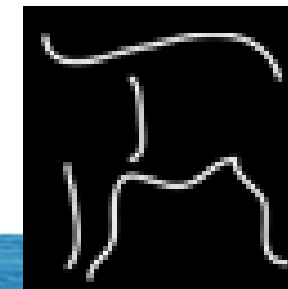
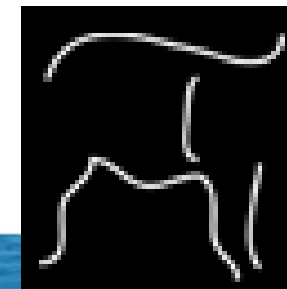
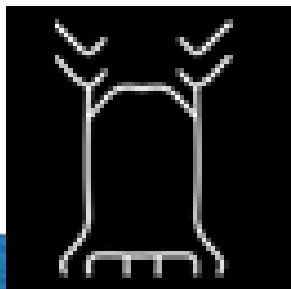
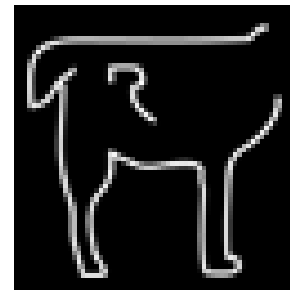
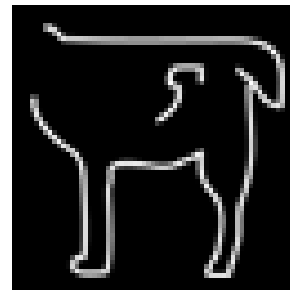
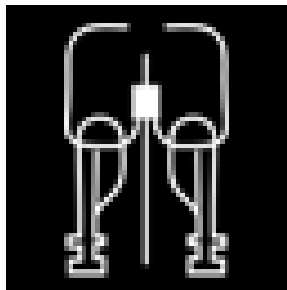
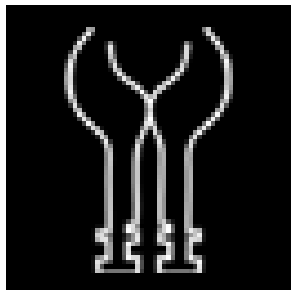
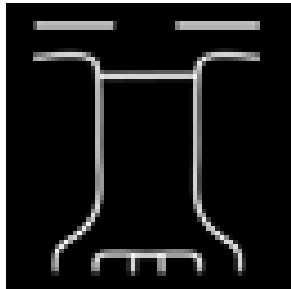
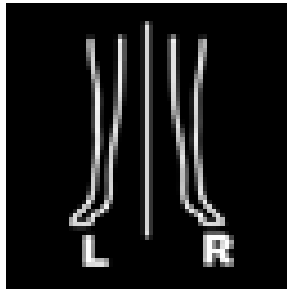
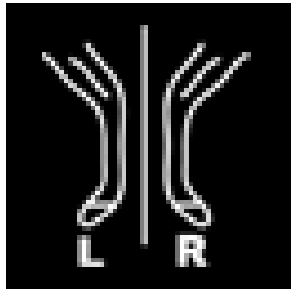


# Full Range VET Software

## Professional calculation package

- **Canine: GSD, CRL, HD, BD**
- **Feline: HD, BD**
- **Equine: GS**
- **Bovine: BPD, CRL, Trunk Diameter**
- **Ovine: BPD, CRL, Trunk Diameter**

## Plenty Vet Body Mark



# Intelligent Workflow

- Intelligent control panel design
- **Full Screen Display**
- EasyView™
- Several one key function
- Full range calculation package
- User defined preset
- Hot key



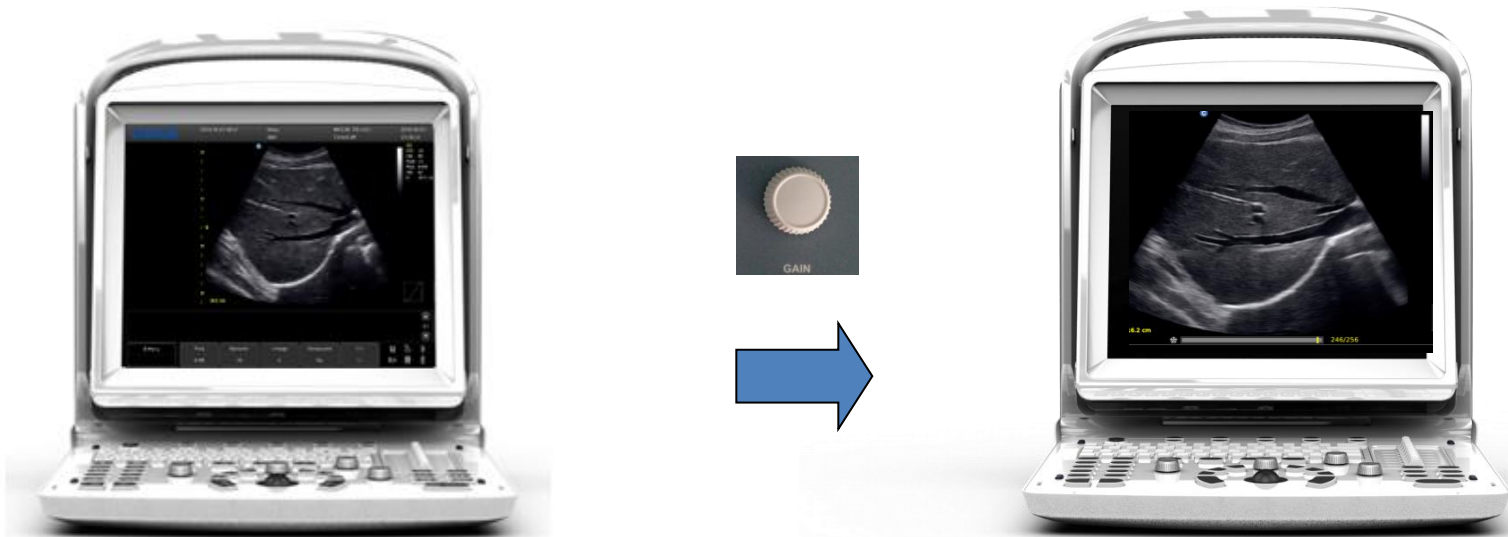
# Intelligent Control Panel Design



- Independent areas for specific functions.
- Backlit keyboard can indicate active keys clearly.



# Full Screen Display



**One key to enlarge the image to full screen , easy to view from distance.**

# Excellent PW

**Excellent PW resolution and automatic PW trace measurement will greatly improve the diagnosis confidence by delivering both qualitative & quantitative results.**

# EasyView™

**CHISON** Review ✕

ID: 2013-05-23-0001(2013-05-23T09:41:33) Name: Sunny



Information  
Report  
Send images  
Delete images

Row\*Column

- 4\*4
- 2\*2
- 1\*1

Pre Page  
Next Page

New Exam Continue Exam Archive Cancel

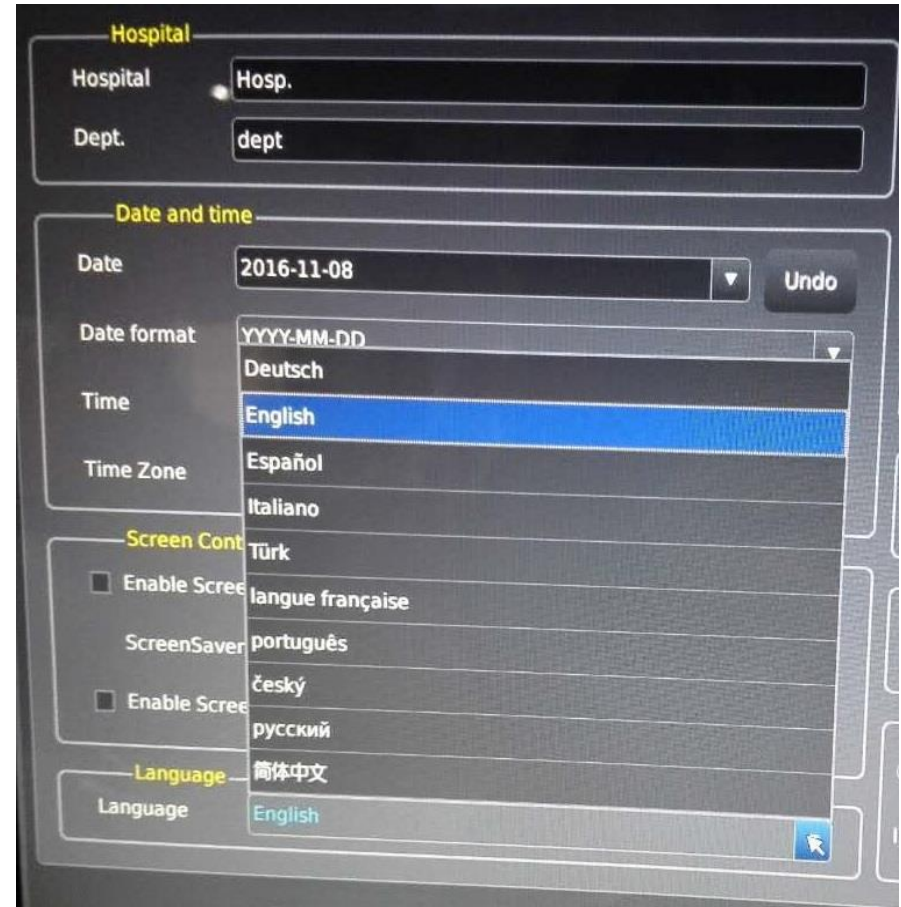
En   



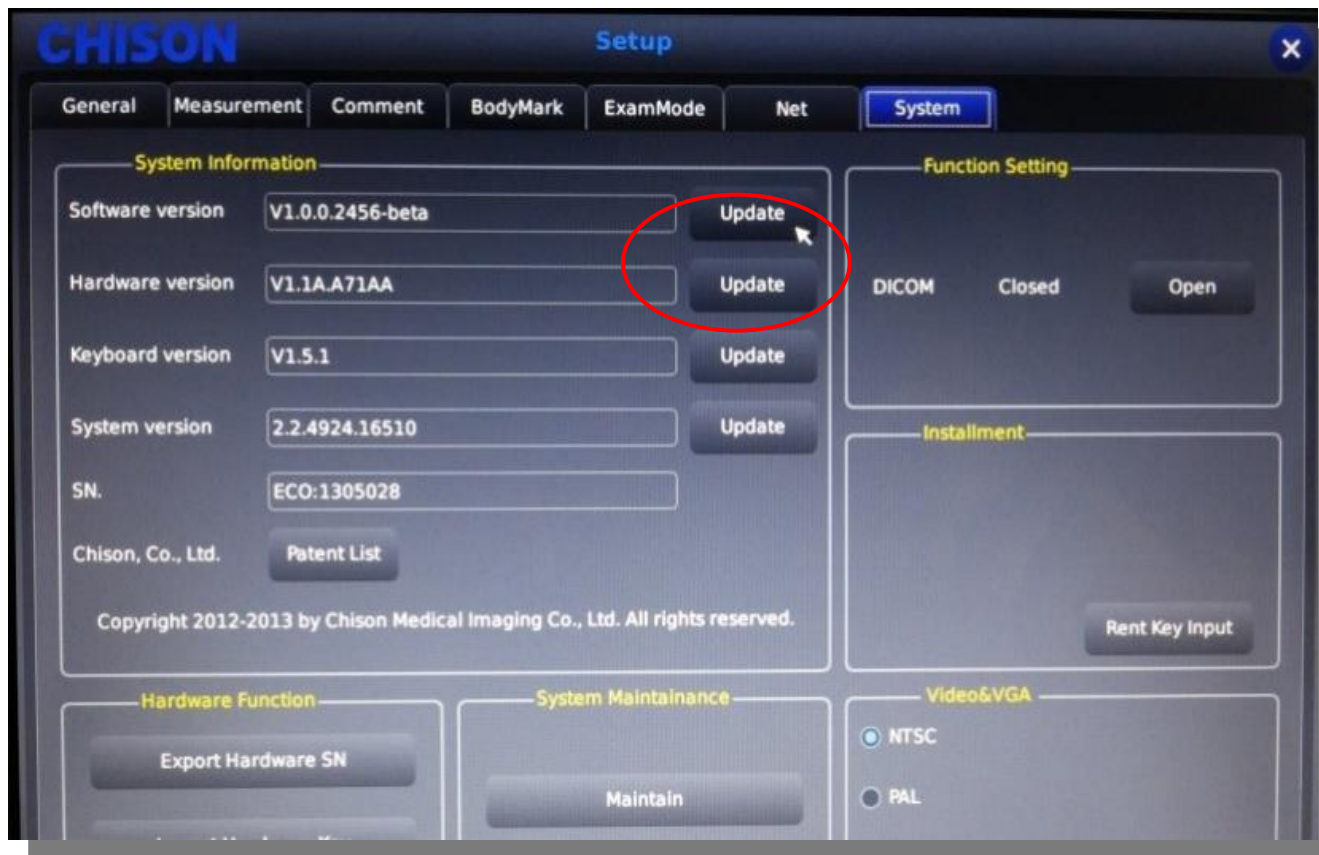
# Language Support

- Chinese
- English
- German
- Spanish
- Russian
- Turkish
- French
- Czech
- Italian
- Portuguese




Change the language without restarting



# One key upgrade—easy to maintain



# Complete solution for accessories

Item	Part number	Picture
<b>Printer</b>	<b>Sony 895MD Sony 897MD Sony 898MD Sony UPD711MD MISUBISHI P-93W</b>	
	<b>HP 1102 HP M251 HP 2055D HP 252dw HP 6230 EPSON L130</b>	
<b>Dedicated Trolley</b>	<b>TR9000</b>	

Item	Part number	Picture
Carrying case	BG-100	
Battery	BT-2500	
Anti-water keyboard cover		
Vehicle Power Charger		



**Thank you!**

**We reserve the rights to make changes  
to this presentation without prior notice.**