

NEWMED



SONOSCANNER

Premium Diagnostic Ultrasound

Ondina



HOSPITAL : DS
USER : RICHARD

PATIENT : RICHARD ETIENNE
EXAM : 08

MARDI 09, 2017
15:10

Ondina



Patient

Settings

THYROID

Freq 8.0 MHz

- +

WITE BAND

Depth 75 mm

- +

TRAPEZOID OFF

COMPOUND OFF

PANORAMIC

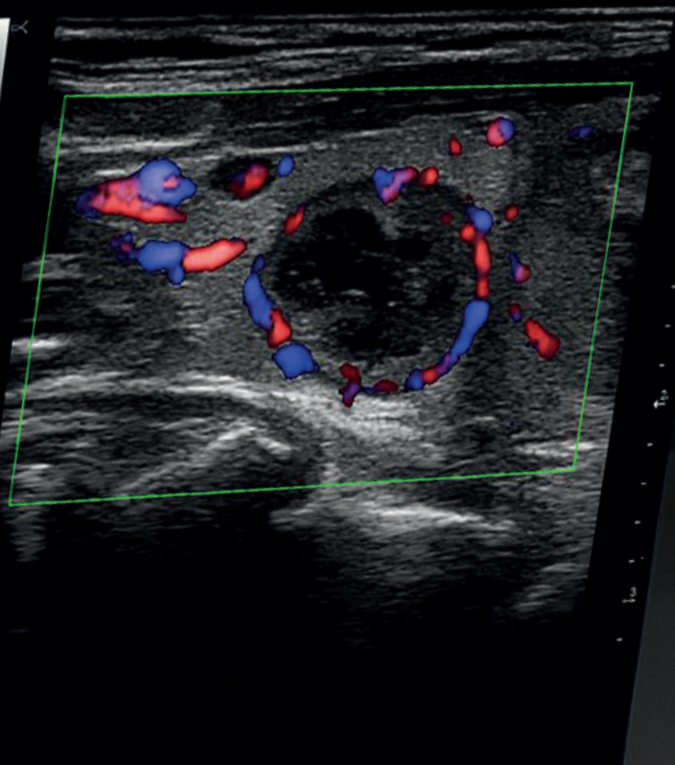
Save Settings

F1 = Contrast 18
F2 = RTAS 0
F3 = Scroll 0

Dual View

Advanced

B
D: 16.6 cm F: 4.0 MHz G: 30.0 dB
FR: 15.9 Hz P: -2 dB DR: 46.8 dB





The Portable Performance

After years of research and development, Sonoscanner is proud to introduce the Ondina, the next generation of portable ultrasound systems.

Designed with your needs in mind, Ondina is the unique combination of a highly portable platform, yet as powerful as an upscale cart-based system.

Because we know you do not want to trade premium performance for portability, Ondina delivers unrivalled image quality to help you achieve clinical confidence every time, anywhere you are.

A complete host for the most advanced imaging modes makes Ondina the versatile solution to your requirements across multiple clinical settings.

Its user-friendly and intuitive interface elevates ultrasound imaging to new levels of productivity by making your exams faster and safer.

Easily upgradable and serviced due to its open configuration, the Ondina will maintain its value for years to come and will allow you to meet the clinical needs of tomorrow.

Ondina is truly versatility and superior image quality almost in your pocket.

Setting the pace of ultrasound technology development, Sonoscanner will continue to work with you toward shaping the future of diagnostic ultrasound imaging.

System Specifications

GENERAL INFORMATION

- Display: High Resolution 15" Touch Led Monitor
- Weight: 4.6 kg
- Dimensions: 37 x 29 x 7 cm
- Rechargeable Battery. Autonomy: 1h30 in scanning mode
- Personalized Presets
- Fast Boot Up and Response Time
- Storage Capacity: 250Go SSD (images, cine loop)
- 2 USB 3.0 Ports
- Ethernet Port
- PS/2 Port
- HDMI Output to External LCD Display
- Light dedicated cart for high mobility

IMAGING MODE

- B Mode (2D)
- M Mode
- Pulsed Wave Doppler & Continuous Doppler Option
- Color Doppler
- Color Power Doppler
- Directional Color Power Doppler
- Duplex Mode
- Triplex Mode
- Tissue Harmonic Imaging
- Trapezoidal Imaging
- **Panoramic and Elastography Options**
- **3D/4D Option**

CLINICAL APPLICATIONS

Radiology, Obstetrics, Gynecology, Small-Parts, MSK, Anesthesia, Urology, Vascular, Abdominal, Pediatrics, Emergency etc...

MAIN PROCESSING FEATURES ON LIVE EXAMS

- Probe Frequency Selection for BW, Color and Doppler Modes
- Single and Multiple Depth Focusing Adjustment
- Velocity Scale
- Automatic Image Optimization Button

MAIN POST-PROCESSING FEATURES

(Available during live exams and on frozen images, recorded images and video clips for post-processing image optimization)

- General Gain
- Color and Doppler Gain
- Baseline Adjustment
- Dynamic Range
- Real Time Adapting Smoothing (RTAS®) for Image Enhancement and Speckle Reduction
- Continuous Zoom X32 and Scroll to Adjust Field of View
- Measurements, Calculations
- Texts and Annotations

Our extensive post processing features allow you to virtually re-run an exam without having your patient in the room. Simply access and enhance previously stored raw image data thus improving diagnostic confidence and patient satisfaction.

*Additional equipment available on demand. Please contact your Sonoscanner representative for complete list.

CE 0197



User friendly and easy to use interface



Just 5kg of high technology



Dedicated Trolley



3 Probes connection kit



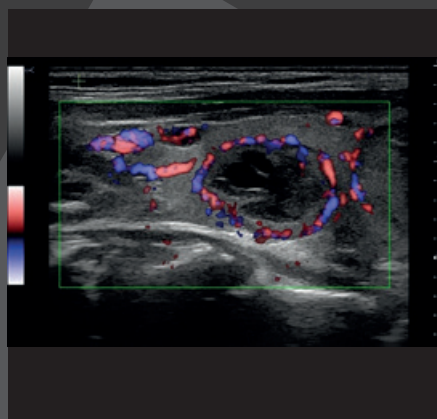
Dedicated travel case

VERSATILITY AND SUPERIOR IMAGE QUALITY

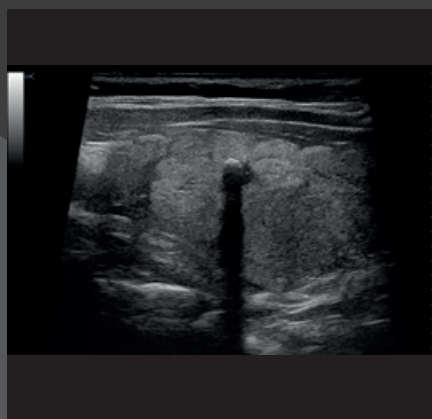
High-end Advanced features:

With Ondina you will benefit from the newest digital technology.

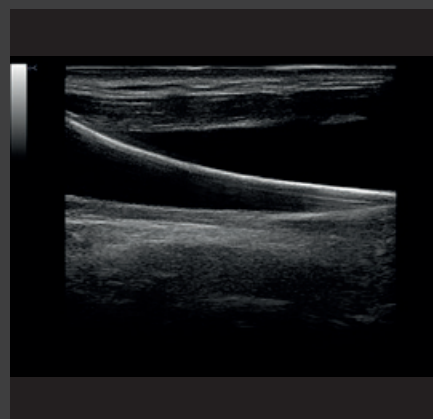
- Exclusive 3D/4D with light rendering and volume rotation
- Elastography for better risk assesment
- Panoramic live scanning to extend the field of view beyond limitation



Thyroid Nodule



Thyroid calcification



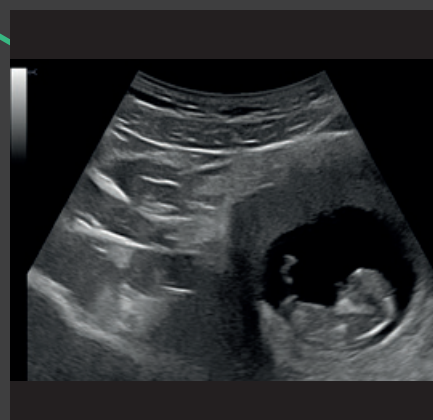
Catheter



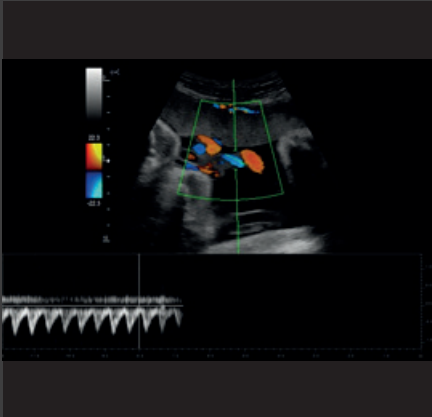
Fetal heart



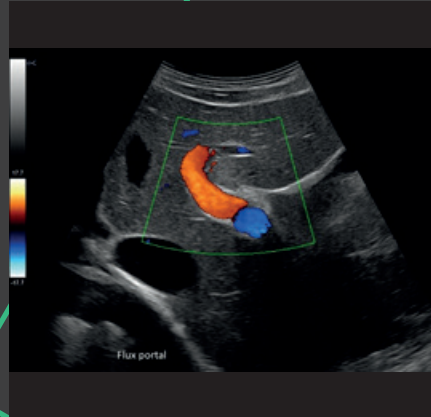
Fetus hand



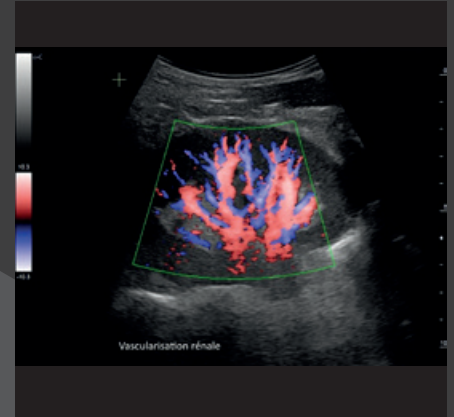
Early pregnancy



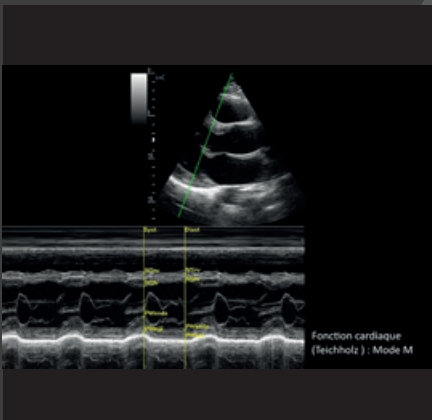
Umbilical Artery Triplex



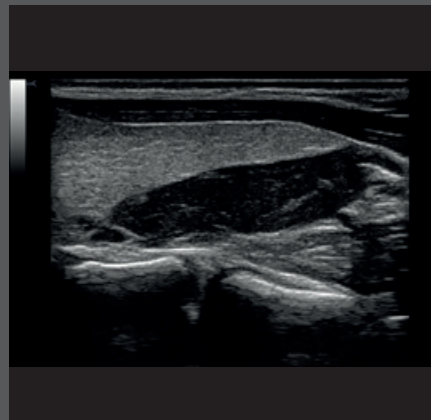
Portal Vein



Kidney



M-Mode: Left ventricle

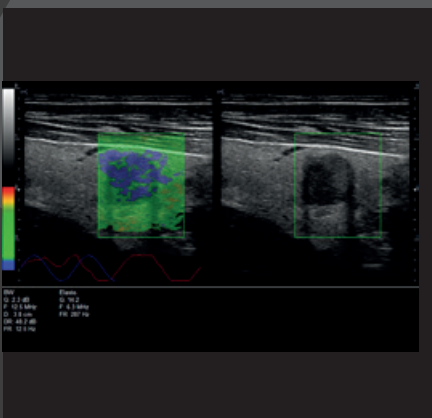


Parathyroid adenoma

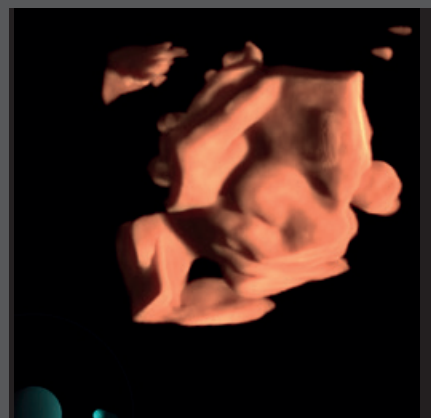


Ovarian follicles

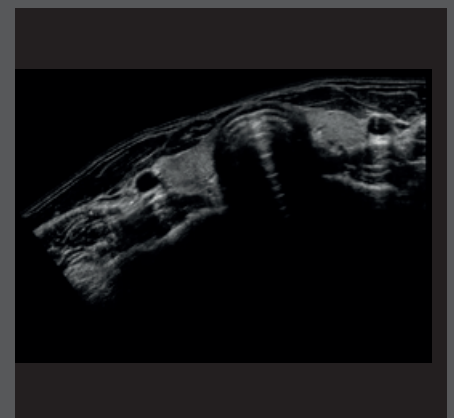
Advanced features



Elastography: thyroid nodule



4D HD rendering



Panoramic view of the thyroid lobes

Ondina Transducers

A complete set of lightweight broadband multifrequency transducers that deliver superior image quality and doppler sensitivity in a wide range of clinical settings. Simply attach the transducer to the Ondina, the system will then auto-recognize the type of transducer being used and will therefore select the appropriate presets.



Volumic Convex Array
3D/4D

3-6 MHz

Obstetrics, Gynecology



Convex Array

2-5 MHz

Abdominal, Obstetrics, Gynecology,
Anesthesia, Vascular, Emergency



Linear Array HD
Very high frequency

8-18 MHz

Small parts, Vascular
Anesthesia, MSK, Sport Medicine,
Pediatrics



Linear Array

5-10 MHz

Small Parts, Vascular, Anesthesia



Endocavitary Array

5-8 MHz

Gynecology, Urology, Obstetrics



Phased Array Probe

1,5-5 Mhz

Cardiology, Emergency, Transcranial,
Pediatric



Micro Convex Array

4-9 MHz

Pediatric, Urology



Hockey Stick

8-18 Mhz

MSK, Anesthesia, Pediatric



3 probes Connector

Please contact your Sonoscanner representative for complete list of available transducers.

SONOSCANNER SUPPORT & SERVICE

By establishing a long term relationship with our local partners, we ensure that a consistent wide array of upscale services will be provided to you by our team of local certified field specialists.

- **On-Site Training:** Upon delivery, our local technicians will provide you with all the necessary training so that you quickly make the Ondina, a productive part of your clinical practice.
- **Additional Training:** Our commitment to keep your ultrasound scanner a match with tomorrow's clinical needs may lead to important updates to be implemented on your Ondina. After major updates, you may request your local Sonoscanner representative to provide you with an additional training to be done either on the phone or directly on-site.
- **Customer Service:** Our local technical support team remains at your disposal to answer by email or by phone any of your inquiry.
- **Maintenance and Service:** In order to maintain the value of your Ondina for years to come, we provide regular operations of maintenance and service on the scanner.

You can count on us to help you deliver the best medical care to your patients.

Sonoscanner reserves the right to make at any time and without notice, any changes in the specifications of the product(s) described in this brochure. Please contact your Sonoscanner representative for the most up-to-date product(s) information.

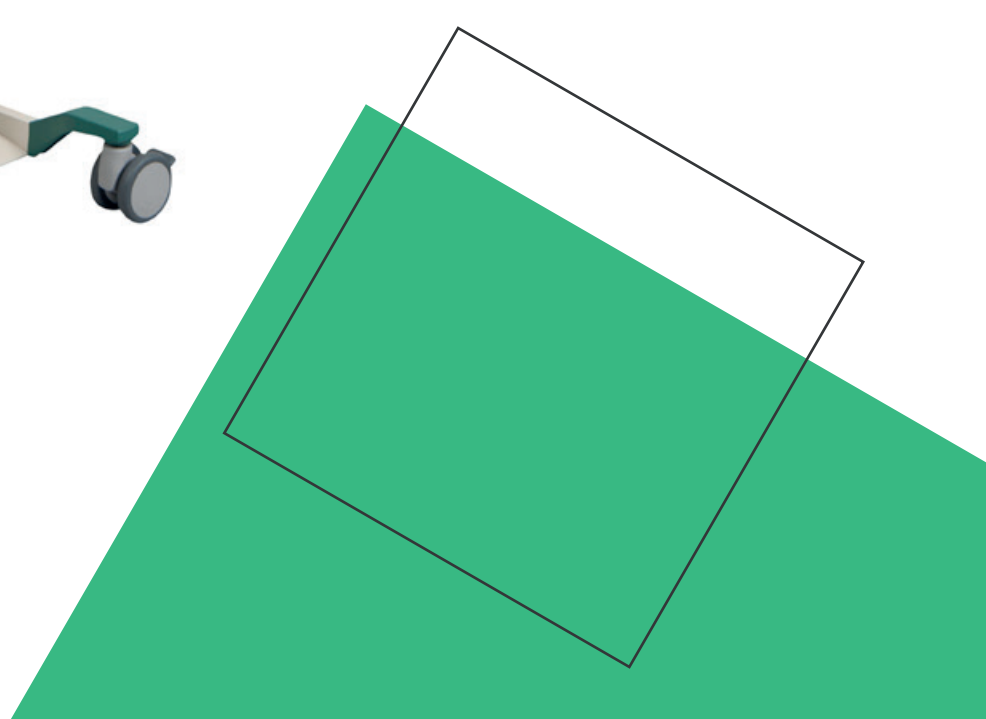


Our Product range

Orcheo xQ



U-Lite





A dedicated and secured online website for all your advanced reporting needs

www.sonoreplay.com

SonoReplay opens the era of connected ultra-sounding. Access your exams from anywhere.

- Full reporting capabilities
- Advanced patient management
- Highest security level for data storage
- Accessible from any connected device





SONOSCANNER

Premium Diagnostic Ultrasound

Founded in 2003, Sonoscanner is the result of decades of ultrasound imaging research, initially led by the Université de Paris.

When it was founded, Sonoscanner's main objective was to provide practitioners around the world the resources they need to perform early and reliable diagnoses. This commitment has not changed, and Sonoscanner continues to offer mobile ultrasound scanners which offer ever-greater performance, versatility and ease of use.

Located in the heart of the French capital, Sonoscanner combines all of the qualities of French technology and expertise. We aim to offer practitioners around the world products of unparalleled quality, so Sonoscanner systems are built using the most modern technology available. They are manufactured and tested according to the most stringent standards. Thanks to this dedication, the U-Lite has been awarded both the CE and FDA labels.

In terms of distribution, Sonoscanner has taken great care to select the best possible local partners. This enables us to provide practitioners with both an exceptional product and the impeccable service they need every day.

Currently, Sonoscanner ultrasound scanners are distributed around the world through our network of local distributors, with whom we have made a long-term commitment.

We aim to maintain our position as pioneer in HD compact ultrasound scanners by constantly working to innovate and fulfil the real needs of healthcare professionals



SONOSCANNER

6 rue André Voguet
75013 Paris – France

+33 9 54 97 15 57
contact@sonoscanner.com

NEWMED

MEDITUONTI OY

045 157 7336

newmed@newmed.fi

www.newmed.fi